



YOUTH & COMMUNITY SERVICES



ANNUAL
REPORT

2012/
2013



ANNUAL REPORT

2012 / 2013

CONTENTS

ANNUAL REPORT 2012/2013

WHO WE ARE	3	PARTNERS	60
A MESSAGE FROM THE CEO	5	CONFERENCES, SEMINARS AND PUBLICATIONS	62
A MESSAGE FROM THE BOARD	8	PAST ACHIEVEMENTS	62
IMPACT OVERVIEW	9	GET IN TOUCH	63
OUR PEOPLE	10		
FUNDRAISING & COMMUNITY ENGAGEMENT	12		
Major Gifts Committee	13		
STRATEGIC GOALS	14		
PROGRAMS	16		
Mental Health and Drug Use "Speak Out" Program	17		
Capacity Building Program	24		
Cultural Supervision	24		
Healing Foundation Project	25		
Step Up Links to Learning	27		
Waratah Links to Learning	29		
The Place Program	31		
Juvenile Justice Program	33		
Just Reinvest NSW	35		
Tutoring Program	36		
Streetbeat Safety and Crime-Prevention Program	37		
Streetbeat Casework and Counselling	39		
Kool Kids Club	41		
Weave Women and Children's Centre	45		
Koori Access Point	47		
OUR HISTORY	49		
GOVERNANCE	51		
The Board	51		
Organisational Chart	55		
Corporate Governance Framework	57		
Financial Performance	58		
FRIENDS, SUPPORTERS AND PARTNERS	60		



WHO WE ARE

Weave Youth & Community Services is a not for profit community organisation dedicated to helping disadvantaged young people, women, children and families reach their potential. Our Redfern / Waterloo facility has been an integral part of local life and a hub of activity for 38 years. The community relies on us for a broad range of free support services and a warm welcome.

Our Vision

A strong, connected community that values its members with opportunities and justice for all.

Our Mission

To support children, young people, families and communities to value each other and create opportunities to realise their goals and dreams.

OUR VALUES

Performance

We pride ourselves on working to best practice standards and the ability to create a real, lasting impact on the lives of those around us. We know that practical and timely intervention can have meaningful value - therefore we work with purpose and focus.

Optimism

We believe hope and a sense of humour are fundamental to keeping people inspired and on course. We understand the complexity of social issues and we find flexible ways to address them.

Fairness

Everyone deserves a fair go in life. We don't judge people or question the life choices they make. We challenge injustice at every level and dedicate ourselves to changing outcomes.

OUR PURPOSE

WHY WE DO WHAT WE DO

Building a strong connected community.

We exist to help people change their lives. We work respectfully to build trusting relationships with those we assist – and then we give them the holistic support they need to flourish into happier, healthier individuals.

Our work relies heavily on the partnerships we have developed within the local community. Over the years, we have brought people together, to a place where amazing things can happen for the most marginalised individuals and families.

The free support services we provide are designed for disadvantaged children, young people, women and families of all ages who live primarily in the old South Sydney Local Government Area, as well as the City of Sydney, Maroubra / La Perouse and Inner West regions.

We focus on creating opportunities for Aboriginal young people – both within our own organisation and beyond and as such, Aboriginal workers play an integral part of our education, information, youth work and child development programs. We also collaborate with other key organisations to reduce the over-representation of Aboriginal young people in detention, improve employment prospects and facilitate healing within the community.

Solid research and statistics underpin our work and guide us in a direction that will have the most far-reaching impact. We use the same evidence to shape our work with Government and have a positive influence on policies that accelerate change.

75
percent of
mental health
problems emerge
before the age
of 25.



A MESSAGE FROM THE CEO



Weave has been part of this wonderfully diverse community for the past 38 years and I have had the privilege of working alongside young people and their families for most of that time. I have witnessed first-hand that good people are at the heart of a good community and together, we help enrich the energy, culture and feel of this city.

The world we live in is changing rapidly and there are many global challenges we continue to face. However, one thing that will always remain is that we need one another to survive and thrive.

In a healthy community, we are well connected and supported by each other, our families and extended family. Unfortunately, the value of community can get lost in a world that prioritises the individual above all else. We live in a country where one in five people live in poverty, where 35% of all children in care are Aboriginal and where 50% of young people in juvenile detention in NSW are Aboriginal – even though they make up just 2.2% of the population. Together, we need to challenge and change this sad reality.

I hear so often from those who come in to our centre, that they feel depressed, isolated, afraid and alone. Our message, and the message that we get back from people within the community is how important friendship, caring and connection are to us all.

Many of the problems that young people face, such as drug addiction and depression, can be a direct symptom of a dysfunctional community. Many of the injustices we witness are due to a lack of understanding about the value of real community. Here in our backyard, poverty and disadvantage is still a big problem for some and simply finding a home or a job is a near impossible struggle.

I believe that the most important work we do at Weave is bringing people from our diverse community together and creating a better one – one that is inclusive and caring for all.

Weave has been a very important part of the Redfern / Waterloo community for 38 years, and this year has seen big changes and challenges for us. We moved back to our old site in Waterloo to a wonderful new building, thanks to funding from the City of Sydney and Federal Government. It has been highly rewarding to re-connect with local young people and residents. Thank you to the Mayor Clover Moore and General Manager Monica Barone, for making this happen.

That said, we have been faced with financial pressure, due to funding cutbacks by the NSW Government across the not for profit sector. What this has meant is that we have had to work with less money whilst broadening the services we provide. We have achieved this so far, but in order to sustain our work, it is critical that we secure long-term funding.

In order to achieve this, we are now actively starting to garner support from the corporate world. Bendigo Bank, for example, generously donated enough funds to help run the Kool Kids program for this year. We have also increased the amount of funding derived from individuals and we will continue to fundraise hard.

Finally, I would like to thank our wonderful Board, led by Louise Wagner and Lindon Coombes. Thanks also to our volunteers and to the many young people and families who are connected with the service. If you're in the neighborhood, come in for a cup of tea, if you want to volunteer we'd love to hear from you.




Shane Brown
CEO, Weave



Artwork by Vanessa Orcher

A MESSAGE FROM THE BOARD

Weave continues to play an important role in our community and beyond. It is a welcoming place, where young people and their families can come and seek support. They can come to connect with the community through counselling, out-of-school activities, housing assistance, training for employment, group and project work and help in overcoming substance abuse.

It's been a busy few years for Weave, and as always, it's a challenge to maintain the quality of services that Weave is known for, within the constraints of changing Government funding and priorities. Due to ongoing issues with funding, we look for ways to offer some level of certainty and flexibility to the services we offer. The Board has therefore apportioned more focus to fundraising, this year appointing a Fundraising Manager to help us meet targets.

Imperative to the future survival of Weave, is our ability to attract a large amount of corporate and private funds. A significant milestone was reached when Weave secured funding from the City of Sydney and the Federal Government to move back to Waterloo and into our new, award-winning building. Not only does this building represent our progress so far, it symbolises to those within our community that this community is worthy of such investment.

It's an honour to be involved in an organisation that creates such an impact within the community and changes so many lives for the better.

We thank all staff and volunteers, without whom Weave wouldn't be able to assist as many young people and families as we do. Particular thanks must go to our passionate leadership team, Shane Brown and Siobhan Bryson, both of whom work incredibly hard to empower our clients to be the best they can possibly be.



A handwritten signature in black ink, reading 'Lindon Coombes'.

Lindon Coombes
Co-Chair, Weave



A handwritten signature in black ink, reading 'Louise Wagner'.

Louise Wagner
Co-Chair, Weave



IMPACT OVERVIEW

2012-2013

We supported **206** young people to access education and training opportunities

We provided a range of after school and holiday programs for **150** Aboriginal children living in the Maroubra and La Perouse area

We provided safe late night transport to **130** young people living in metro Sydney

We assisted over **3000** Aboriginal community members to get the right information about services and assistance available

370 visits occurred at the Weave Arts Centre

Weave reached **7,073** children, young people, women and families during the reporting period

We provided practical support and counselling to **402** young people, women and families with issues associated with mental health, drugs and alcohol, domestic violence, sexual abuse, trauma, grief and loss

OUR PEOPLE

BUILDING RELATIONSHIPS AND STRENGTHENING THE COMMUNITY

STAFF

"I HAVE WORKED FOR WEAWE FOR THE PAST NINE YEARS, I VALUE THE INCREDIBLE SUPPORT SHOWN BY FELLOW WEAVERS AND THE FACT THAT WE ALL WANT THE BEST FOR OUR CLIENTS."
ALEX MCALEES, STREETBEAT COORDINATOR

We are proud that Weave has been recognised as an employer of choice. We listen carefully to what our team of *'Weavers'* have to say about the direction of our organisation and about the day-to-day services we provide. Our staff are always challenged and encouraged to be innovative in their work and to think creatively – so they can feel as proud as we are.

During 2012/13 alone, we employed 35 part-time and full-time staff, including youth workers, counsellors, psychologists and clinical psychologists, teachers, and social workers. Each and every one of them works hard to weave the community together, through social connection and caring.

We provide our staff with regular support, supervision and access to extensive training opportunities throughout the year - including the provision of paid external clinical supervision for casework and counseling staff, peer review, peer development and cultural supervision. We also hold an annual team building event, whereby staff can get together, kick back and enjoy plenty of laughter.

Each and every staff member at Weave plays a crucial part in making Weave the warm and welcoming family that it is today.



VOLUNTEERS

"I VOLUNTEER BECAUSE I HAVE A DESIRE TO HELP OTHERS. I WANT TO BE A POSITIVE ROLE MODEL IN MY COMMUNITY. I HAVE A LOT OF LIFE EXPERIENCE AND I'D LIKE TO SHARE IT WITH THOSE WHO DON'T HAVE THE SUPPORT STRUCTURE OR ROLE MODELS TO HELP STEER THEM IN A POSITIVE DIRECTION."

MICHAEL PATTALIS, BRAND MANAGER YATES

We are grateful to our growing number of volunteers who provide support for many of our initiatives. Without their contribution, we would not be able to run some of our community programs. These remarkable individuals are drivers for our late night transport service, compassionate youth mentors and also tutors who have a positive impact on the education of many.

Groups of volunteers from large corporates help us with painting, creating gardens and renovating spaces. Only recently, we had the pleasure of working with volunteers from AMP who invited us into their Ideas Lab for an exciting visioning session. AMP generously provided the space, the staff support and documentation to optimise our time and ensure we walked away with some incredible insights. We were fuelled with a tasty lunch and inspired by a 25th floor view of Sydney Harbour!

This year we worked with over 100 volunteers and next year we hope to significantly increase that number, in support of our vision. Perhaps the most heartening part of our volunteer program is the number of clients who come and give back, after seeing first-hand the benefit our programs have brought to their own lives.

We welcome with open arms people who want to become Weavers and play their own small part in making dreams come true.



FUNDRAISING & COMMUNITY ENGAGEMENT

THE LIFE BLOOD OF OUR GOOD WORK

"THE GREAT PEOPLE WHO WORK AT WEAVE MAKE SUCH A DIFFERENCE IN THE COMMUNITY. I CAN'T THINK OF ANY OTHER GROUP I WOULD RATHER SUPPORT."

DIANE LANGMACK, PR MANAGER, PENRITH PANTHERS & VOLUNTEER FUNDRAISER, WEAVE

Funding from individuals and philanthropic sources makes up a considerable portion of the funding required to sustain the level of services on offer at Weave. Without this support, the remarkable results we achieve would simply not be possible.

Recent changes to Government funding streams were the catalyst to a significant shift in focus to fundraising at Weave. In April 2012, we employed a professional fundraiser, with the objective of increasing philanthropic grants and donations. One of the many initiatives now in place since their appointment is the new Weave e-newsletter, Connection – designed by Deepend Digital and sent bi-monthly to a database of 1,700 people.

This year, Weave held two important fundraising nights; The Weave Arts Centre's Art Auction Exit Exhibition (June 2012) and the All Sorts Swim Sport Sail Fundraising Auction for Kool Kids Club (November 2012).

As at 30 June 2013, philanthropic grants, recurring donations, individual donations and in-kind support had increased

significantly, partly thanks to the Vincent Fairfax Family Foundation who awarded a major philanthropic grant in December 2012 to support the Kool Kids Club over a two-year period.

We were also thrilled to receive in-kind support for our services and programs from corporates; including Telstra, All Sorts Gym & Indoor Sports, DDB Design, Deepend Digital, Anaconda, Bunnings Warehouse, Jamieson Park Paddle and Walker Books Australia.

We help individuals and philanthropic organisations give-back to those in need. We welcome both small and large donations because every bit helps.



MAJOR GIFTS COMMITTEE

April 2013 saw the first meeting of Weave’s volunteer Major Gifts Committee, set up to raise \$3 million in endowments, across a three-year period.

The Committee consists of three core volunteers (Ross Steele, a former financier now retired; Julia Ryan, a former advertising executive and current Weave volunteer tutor; and Diane Langmack, PR Manager, Penrith Panthers and Deputy Chair RPA Foundation).

Working together, the Committee will drive forward the strategic fundraising plan to acquire new donors, facilitate better engagement with existing donors and strengthen relationships with both individuals and corporations.

We’re always looking for new and creative ways to raise support. If you would like to get involved, please contact us.

“WEAVE DELIVERS VERY SPECIAL SERVICES THAT CAN DRASTICALLY CHANGE THE LIVES OF VULNERABLE PEOPLE WITHIN THE COMMUNITY. THE IMPRESSIVE AND PASSIONATE TEAM OF STAFF AND VOLUNTEERS COULD DO FAR MORE, IF ADDITIONAL FINANCIAL RESOURCES WERE AVAILABLE. SO, THE CHOICE TO BECOME A VOLUNTEER FUNDRAISER WAS EASY.”
ROSS STEELE FINANCIAL ADVISOR



STRATEGIC GOALS

OUR ROADMAP TO SUCCESS

In order to do justice to the work and support we receive from our staff, volunteer groups, supporters and partners, Weave has set the following strategic goals:





OUR PROGRAMS

SERVICES THAT HELP CREATE A BRIGHTER FUTURE

We pride ourselves on offering a broad range of free community programs. Our approach is to listen to the specific needs of each and every client, then implement an individual support plan.

OUR PROGRAMS INCLUDED:

- **INFORMATION AND REFERRAL SERVICES** for all Aboriginal people
- **EDUCATION AND TRAINING** for young people at risk of leaving school, for those who have left school early or are unemployed and need to develop new skills
- **CASEWORK AND COUNSELLING** for young people with both mental health problems and drug/alcohol issues
- A regular on-the-ground presence in the local community to assist with **IDENTIFYING YOUNG PEOPLE AT RISK** and then working with them to **HELP RESOLVE THEIR PROBLEMS**
- Assistance to young people who have offended, are at risk of offending, or are currently in the **JUVENILE JUSTICE** system
- **WOMEN AND CHILDREN'S SERVICES** for those who are in need of a range of support including domestic violence, parenting and housing
- **LEADERSHIP OPPORTUNITIES** for young people to become actively involved in their local community
- **DEVELOPMENTAL AND RECREATIONAL PROGRAMS FOR CHILDREN** aged 7-13, in the La Perouse area
- **THE FERNSIDE SKATE PARK**
- **TUTORING**

MENTAL HEALTH AND DRUG USE “SPEAK OUT” PROGRAM

Helping young people break the cycle



“EVERY YEAR 12 CLASS IN AUSTRALIA HAS AT LEAST ONE STUDENT WHO HAS ATTEMPTED SUICIDE. MORE THAN 1 IN 4 YOUNG PEOPLE SUFFERED A MENTAL ILLNESS AND ALMOST 20% OF YOUNG MEN BELIEVED THEIR LIFE WAS “NOT WORTH LIVING”. ” BEYOND BLUE

Today, more and more young people experience co-existing mental health and substance abuse issues. The unwarranted stigma associated with mental illness, prevents young people from speaking out about their daily battles. Instead, many turn to drug use as a means of escape.

Weave provides dual diagnosis support in the following areas:

- Counselling
- Group Work
- Case Management
- Social Group Activities
- Practical Support
- Project Work
- Family Therapy
- Community Development
- Outreach Support

HIGHLIGHTS

- **ART WORKSHOPS** – A series of workshops were delivered in conjunction with Missenden Mental Health Unit, Concord Mental Health Unit, The Settlement Neighbourhood Centre, Rendu Youth Services, South Sydney High School and NSW Juvenile Justice.
- **A PINT OF VIEW** – Weave organised and hosted a Youth Alcohol Forum, in collaboration with the Redfern / Waterloo Community Drug Action Team.
- **SPEAK OUT SPEAK ART** – This short film was entered into the Smart Arts Youth Festival.
- **BARANGAROO HEADLAND PARK PROJECT** – Speak Out, together with The Settlement Neighbourhood Centre, painted privacy screens for the Barangaroo building site.
- **THE FLASH MOB PROJECT** - 25 young people participated in a dance in Sydney’s Hyde Park, in aid of Youth Week.
- **BUSH CIRCLE ADVENTURE THERAPY** - A new project within the Speak Out program, Bush Circle ran from January to June

Funding for the ‘Speak Out’ program was provided by the Commonwealth Department of Health & Ageing, through the National Illicit Drug Strategy (NIDS).



2013. The project supported 16 young people suffering from both mental health and alcohol or drug issues.
- **STREET CREATURES** - A project developed by young artists Thomas Thorby Lister and Neil Tompkin, Street Creatures encouraged young people to express themselves through art and skateboarding. Weave proudly supported this project, with co-funding from the City of Sydney.
- The artists held a series of workshops for 20 young people at Erskineville Recreation Centre. Each participant designed and decorated a skateboard deck and proudly exhibited their finished art at 107 Redfern Street, a community art space owned by City of Sydney. Friends and family were invited to attend and each participant received full skate deck and wheels.
- Street Creatures worked alongside a variety of organisations including Westsyde Connections’ ‘Right Push’, 107 Projects, Totem Skate School, Erskineville Youth Centre and NAIDOC



WEAVE ARTS CENTRE

(PART OF THE "SPEAK OUT" PROGRAM)

"ART SAVES PEOPLE. WEAVE HAS SAVED ME. THE DIFFERENCE BETWEEN ARTISTS WORKING AT WEAVE AND INDIVIDUAL ARTISTS WORKING AT INDEPENDENT STUDIOS IS GREAT. WEAVE PROVIDES COMMUNITY AND VARIETY OF ARTISTS AND WORK WHICH ARE BOTH INSPIRATIONAL AND ASPIRATIONAL. ARTISTS WORKING TOGETHER BRINGS OUT THE BEST IN EVERYONE INVOLVED AND PERSONALLY COMPLETES A DREAM OF MINE TO WORK ARTISTICALLY."
EAMONN MILLER, YOUNG ARTIST.

The Weave Arts Centre (WAC) was a place where marginalised people experiencing a range of issues came to get involved in to do art. It was a place of social inclusion where people felt safe, supported, connected and inspired.

Weave Arts Centre was a place free of judgment, stigma and assumptions. People were seen as unique individuals with strengths, skills, abilities and passion. People were given creative license to illustrate and express experiences, fears, hopes and dreams through oil paint, watercolour, lino prints and sculpture. WAC is a place where all the ups and downs of life are acknowledged and celebrated.

Although WAC did not provide "Art Therapy" as such, it was definitely a place where the supportive environment and practice of art provided lots of therapeutic outcomes. Participants report feeling a greater sense of connection to people and community, as well as improved self-esteem and confidence. Those who take part feel valued, respected and motivated.

The centre helped people engage in creative, productive and supportive programs that enhanced their artistic skills and improved their overall wellbeing physically, mentally, emotionally and socially. As a social enterprise, WAC provided vocational pathways for people otherwise excluded from the labour market.

Many of the clients accessing the Dual Diagnosis team are young people that have been dislocated from family, engaged in the Juvenile Justice system, self-medicating by indulging in substance use to cope with life circumstances and experiencing emerging mental health issues. Often our young people have been socially excluded from mainstream schools and employment. The program works very intensely with these young people, helping them to make sense of their life and their circumstances. This gives them an action plan to assist young people to achieve their goals and to find ways of moving forward in the future.

The Dual Diagnosis team was well integrated with the Arts Centre as it provided a cross over of shared clients and ongoing continuity of therapeutic care to young people accessing both

programs. Anecdotal evidence supports the view that integrated therapeutic, psychosocial and recreational services that employ a "whole of person" approach largely improve "people's overall sense of mental wellbeing and capacity to function socially" (MHCC Social Inclusion 2007).

Sadly, the Weave Arts Centre closed its doors in June 2012 as we had to vacate the venue we had been operating out of to make way for a social housing development and we had been unable to source an alternative venue and ongoing operational funding.



BUSH CIRCLE ADVENTURE THERAPY (PART OF THE “SPEAK OUT” PROGRAM)

A supportive environment to survive and thrive

*“STATISTICS SHOW THAT 25% OF ALL DISABILITY IN AUSTRALIA IS CAUSED BY MENTAL HEALTH AND SUBSTANCE USE.” **BLACK DOG INSTITUTE***

When young people suffer from alcohol and other drug problems, it's not uncommon for them to feel isolated and disconnected from the world. Bush Circle Adventure Therapy is about bringing together young people and providing a safe and supportive environment where they can build real relationships, learn how to manage stress, make empowered decisions and develop a culture of peer support.

“TO US, OUR GROUP MEANS SUPPORT, WILLPOWER, SPIRIT, EXCITEMENT, STRENGTH, FREEDOM, FRIENDSHIP, COURAGE, LAUGHTER AND EMPOWERMENT!”

The program involved camping with group work, team-building, adventure therapy (rock climbing and backpacking), leadership and relational exercises and the development of Traditional skills with local Aboriginal elders.

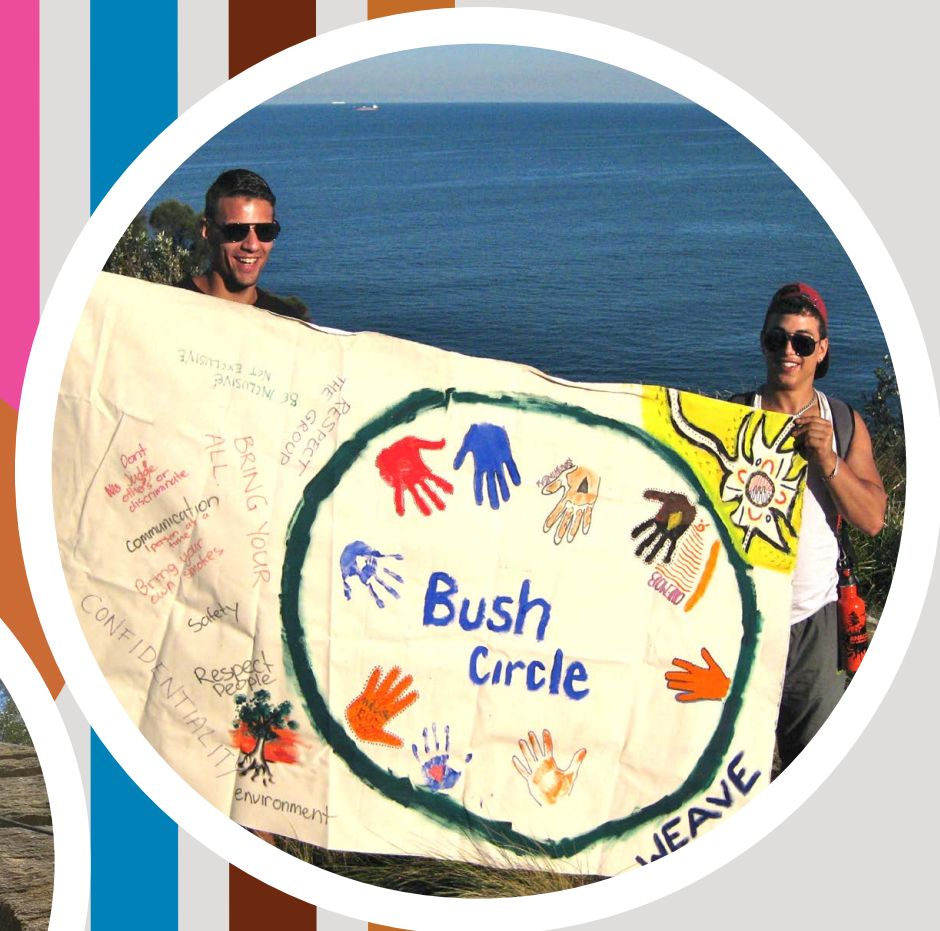
After the camp was over, learnings and experiences were integrated into day-to-day life during five weeks of group activities, held closer to home. Through peer support and ongoing connection, each and every participant made remarkable progress with their drug and alcohol issues and several ceased usage altogether.

“THROUGH MY BUSH CIRCLE JOURNEY AND THE LEADERSHIP ROLE I TOOK ON, I WAS ABLE TO OVERCOME MY DRUG USE. NOW I SPEND MOST OF MY DAYS BUILDING MY CONFIDENCE AND IMPROVING MY LEADERSHIP ABILITIES FURTHER.”

85% of participants were Aboriginal young people, hoping to learn and experience new things about their culture, so they can feel proud about their Aboriginal elders. The program can be life changing for many who continue to reflect on the power of Aboriginal tradition and their sense of identity as a way of healing.

After the program, six participants took it upon themselves to set up an ongoing youth leadership network, to help others feel supported and connected.

“BUSH CIRCLE WAS AN EXPERIENCE THAT CAN NEVER BE FORGOTTEN. IT'S MOTIVATED ME TO DO BETTER AND ENCOURAGE OTHERS TO SHARE IN THE SAME EXPERIENCE. DURING THE PROGRAM WE DEVELOPED AN ONGOING PEER LEADERSHIP NETWORK SO THAT WE COULD STAY CONNECTED AND BECOME LEADERS IN OUR COMMUNITY.”



Introducing Daniel

When 23 year old Daniel came to Weave for counselling, he was struggling with Post Traumatic Stress Disorder. He was experiencing depression, anxiety, outbursts of anger and ongoing feelings of detachment and hopelessness. His escalating drug usage was only making matters worse and Daniel faced criminal charges as a result.

Having never sought counselling before, Daniel decided that it was time to get help. Not a fan of sitting inside, we counselled Daniel whilst walking and talking in the park. Through the power of talking, Daniel began to realise that his challenging childhood and early exposure to drugs, alcohol and violence had shaped his current view of the world, and not in a good way.

Daniel went on to recognise his strengths, appreciate his own resourcefulness and independence. Over time, he developed a strong desire to not only help himself, but help those around him too. Today, Daniel has a full-time job that he enjoys. Over a period of four months, he made his own decision to decrease his drug use. Weave supported him through his court process, which resulted in Daniel receiving a good behaviour bond to allow him to continue on his new path.

Today, Daniel’s goal is to understand more about himself, so that he feels more in control of and remains open to new possibilities. In exploring new ways to emotionally regulate, Daniel signed up for regular meditation classes. He is in the process of discovering new ways to be social, to celebrate and to relax. Daniel’s interests currently include team sports and photography.



CAPACITY BUILDING PROGRAM

Service excellence built on the right training

“THIS SPECIAL FUNDING HAS ALLOWED US TO IMPROVE OUR MANAGEMENT STRUCTURE, DEVELOP A CLIENT DATABASE AND PROVIDE MEANINGFUL TRAINING TO OUR STAFF.”
MEGAN WALLACE, CAPACITY BUILDING MANAGER

Through a successful application to the Department of Health & Ageing, Weave secured this vital funding to equip our organisation with new mental health training and service system improvements.

NEARLY 13% OF AUSTRALIANS LIVE IN POVERTY. THAT’S ABOUT 2.25 MILLION PEOPLE AND OVER HALF A MILLION KIDS.

THE FUNDING HAS BEEN APPLIED IN FOUR KEY AREAS:

- THE WEAVE DATABASE**
Weave implemented a client management system designed by the Ted Noffs Foundation. The system has been customised for Weave and has positioned us well to track client outcomes more effectively, whilst maintaining the client-focused approach we are well known for.

With nearly 2,300 clients involved in our programs each year, this new technology will radically improve efficiencies around the analysis and subsequently delivery of meaningful improvements to service delivery.
- TRAINING & DEVELOPMENT**
During the last two years, Weave staff have received a significant amount of high quality training. As a result, staff feel more confident in their work and clients have consistently given feedback that they feel well supported.

Specifically, the training has included cultural competency, motivational interviewing, conference in trauma, mindfulness, narrative therapy training, vicarious trauma training, accidental counselling and management & supervision training. In addition, we facilitated inter-departmental training to leverage the expertise that already existed within each team.
- SERVICE ACCREDITATION**
Weave has embarked on the journey of Accreditation, a process of reviewing and improving systems and processes to ensure we continue to meet National quality standards. Our Accreditation will help us deliver an optimum clinical approach, improved safety measures, superior governance and planning and the highest possible outcomes for our clients.

The framework we have chosen is ASES (Australian Service Excellence Standards), a framework designed specifically for non-government organisations. A key aspect of this Accreditation is the focus on consumer participation. As part of our assessment, clients at Weave will become an integral part of our development, planning and delivery of services. Clients in turn will benefit from a sense of self-empowerment and a feeling that their experiences and opinion is valued.
- CULTURAL SUPERVISION**
Cultural supervision is a process whereby staff members have the opportunity to learn and better understand the complex cultural aspects of the Aboriginal community. Every two months, Weave’s Aboriginal team members make themselves available after the staff meeting, to provide cultural supervision to their colleagues. The objective of this exercise is to ensure safe practice and culturally appropriate behavior, promote professional development and also facilitate better responsiveness to our Aboriginal clients.



HEALING FOUNDATION PROJECT

Turning generational trauma into cultural strength

"THE WOMEN'S YARNING CIRCLE HAS PLAYED AN INTEGRAL PART IN CONNECTING WOMEN ELDERS WITH OUR YOUNGER GENERATION, SO THAT OUR CULTURE CAN BE PASSED ON AND KEPT ALIVE. THIS PROJECT HAS HAD A BIG IMPACT ON ME PERSONALLY, BECAUSE I AM PASSIONATE ABOUT MY CULTURE."

Over the past year and through the provision of funding from the Healing Foundation, Weave has implemented a number of programs designed to address the impact of generational trauma in the local Aboriginal community, foster strength in culture and subsequently help us to provide culturally appropriate healing.

THE PROGRAMS WE RAN THIS YEAR ARE:

- Weekly Aboriginal Women's Healing Circle
- Weekly psycho-educational programs for primary school children (through the Kool Kids Club) and for high school students (through the Links to Learning program)
- Psycho-educational programs for women under the supervision of Probation and Parole



Introducing Nathan

Nathan is a young boy who was involved in a Healing Foundation film project, designed to explore what it means to be Aboriginal. On his very first day at Kool Kids Club, it became apparent that he had significant behavioral issues, finding it extremely challenging to concentrate and involve himself in discussions. The same issues were reported by his school.

Over the coming weeks of the program, Nathan started to develop cultural knowledge about his community, his totem and ancestors. What started to emerge was a sense of pride and soon enough, his challenging behavior reduced.

As time passed, Nathan became extremely focused and involved in every task. He played a lead character in the film and became extremely determined to do a good job. Each week after the project, Nathan went home and talked about his experiences with his family and particular his grandmother who is an elder within the community.

His grandmother was so proud of his new attitude and of the work of the project she also played a role in the film. This act alone was a truly remarkable display of the impact of this program.



STEP UP LINKS TO LEARNING

Giving young people a better start in life

"EDUCATION IS A GAME CHANGER IN THE FIGHT AGAINST POVERTY AND EVERY PARENT SHOULD FEEL CONFIDENT THAT THEIR CHILD IS GOING TO HAVE ACCESS TO THE HIGHEST QUALITY EDUCATION. IT SHOULD NEVER DEPEND ON WHAT THEY CAN AFFORD OR WHERE THEY LIVE."

JOHN FALZON, AUTHOR, THE LANGUAGE OF THE UNHEARD

A frightening number of young Australians have a sub-standard school experience, and as a result, many leave school before they even finish primary school education. Poor literacy, numeracy and social skills are barriers that greatly hinder their chances of finding employment.

Over the past 22 years, our Step Up program has successfully provided an education alternative for young people who are failing in mainstream education.

In partnership with JJ Cahill and Alexandria Park High School, the program is delivered both inside and outside of the classroom and seeks to help young people between the ages of 16 and 24:

- Become actively engaged in learning
- Achieve individual goals in key areas of competency
- Gain insight into trades and work-ready programs
- Re-join mainstream school or go on to alternative study

HIGHLIGHTS

● CHALLENGING OUTDOOR PROGRAM

The Activ8 outdoor program proved a huge success. Out of the 12 young people who enrolled, 11 went on to graduate. The program involved a series of challenging outdoor activities and a five-day caving and abseiling camp. Many within the program had never even left the city before. Merely being five hours out of Sydney and a whole 50 kilometers from nearest town with no mobile reception, was an experience in itself. Participants gained valuable social skills that can be applied to study and work, including team working, communication and managing emotions.

● LANDSCAPE AND GARDENING PROGRAM

The Landscape & Gardening program produced extremely

pleasing results at the end of 2012. Not only did all participants successfully complete a landscape project (the garden and picnic area at the PCYC Waterloo) and graduate with a Certificate II, three of the participants went on to enroll in a Certificate III in Horticulture/Landscape at TAFE. Others went on to seek and successfully secure employment in the landscape and gardening industry.

● TRADES AND CONSTRUCTION PROGRAM

Step Up commenced 2013 with a Trades & Construction course. In conjunction with Bunnings Warehouse Alexandria and TAFE Ultimo, we were able to enrich the course with a level of training that provided the opportunity to graduate with a Certificate II qualification.

65

Program
Participants

This year's Step Up program achieved a phenomenally high success rate:

65

young people
completed the Step Up
Program

18 young people entered full-time
or part-time employment

6 young people went on to enroll in
a TAFE Course

21 young people enrolled in
school at the beginning
of 2013

"THE PROGRAM HELPED ME GET INTO THE ROUTINE OF WORK AND NOW I AM EMPLOYED FULL-TIME AND LOVING IT!"

● BEAUTY THERAPY PROGRAM

"LOVELY" BEAUTY COURSE

Eleven young people commenced the Lovely Beauty course. This was a hands-on course with minimal theory. The young women learned skills in communication, WH&S procedures, how to do facials and apply make-up.

Six young women graduated. Of these graduates, two women enrolled in a Certificate III in Beauty at TAFE in 2013. One enrolled at TAFE to complete her year 10 in 2013. One participant has become a mother and will try and obtain her Year 10 certificate through distance education.

OUTCOMES

- Developed effective communication skills
- Applied WH&S skills and procedures
- Shared personal experiences and knowledge
- Opportunity and environment to practice newly acquired skills and new knowledge
- Determined own effectiveness through feedback with trainers and each other
- Confirmed personal roles and responsibilities during learning process
- Social connectedness
- Addressed requirements for employment and further training
- Established relationships with trainers/coordinators

Introducing Barbara

A single mum with a five year old child, Barbara had been unemployed for four years when she turned to Weave. Having enrolled in a TAFE course only to find it too formal and stressful, Barbara felt intimidated enough to leave the course.

An appointment with a job service provider led to her enrolment in a Weave Beauty Therapy course, delivered in conjunction with TAFE Outreach Ultimo. During her studies, Barbara excelled and thrived on getting together with other students. Up until this point, she had felt isolated, but was now meeting new people and developing new skills.

Barbara graduated from the course with flying colours and has since secured a part time job to support herself whilst applying for the Certificate III in Make-up at TAFE for 2013.

A big thank you to TAFE Outreach Ultimo for providing qualified teachers to deliver this course. We couldn't have done it without you.



WARATAH LINKS TO LEARNING

Facilitating better education and a pathway to success

"I LOVE COMING TO THE WARATAH GROUP BECAUSE WE GET SUPPORT AND HELP WE DON'T ALWAYS GET IN OUR OTHER CLASSES."

Students who are disengaged from school need a little extra help and support, so that they can learn, grow and ultimately reach their full potential. Feeling good about your background and understanding your cultural roots can make all the difference.

The Waratah program was established to assist Year 7 to Year 12 Aboriginal and Torres Strait Islander students who are at risk of leaving school. Specifically, the program is designed to:

- Effectively engage students through culturally appropriate learning
- Design and implement an individualised educational pathway
- Set goals based on personal abilities and desires
- Provide one-on-one support, both in and out of the classroom

HIGHLIGHTS

● YOUNG MOB LEADERS PROGRAM

One of the most successful programs this year. 15 Aboriginal students successfully completed a program designed to help them understand the importance of culture and the positive impact it can have on future education.

Each student had an opportunity to discover their own identity, including what language, tribe and totem their mob came from. During the program, the students learnt to speak publicly, without shame and with new-found confidence and self-esteem.

● JOURNEY TO RESPECT PROGRAM

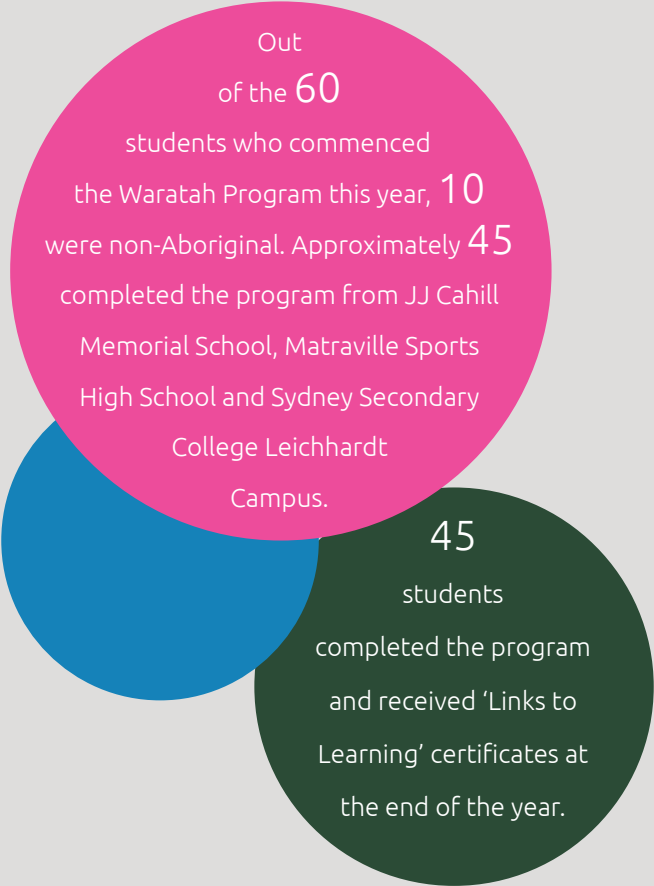
The Journey to Respect Program was developed by the Dept. of Juvenile Justice as a crime prevention and behavioral initiative and has since been introduced to the schools that we work with, in the Redfern area. Our own adaption of the program allows students to explore indigenous culture and who they are as individuals. After completing the program,

students demonstrate tremendous personal growth and positivity about their future.

● CULTURAL CAMP

Providing a safe and supportive environment to learn about and explore Aboriginal culture, this three day workshop involved 16 students, two Weave staff members and three sexual health staff members from South East Sydney Area Health Service. Students from each of the schools were invited to Wreck Bay on the South Coast to camp and hear stories about bush food, medicine, dance and history.

Speaking at the workshop were Aunty Barbara, an elder from the South Coast and also staff from South Eastern Area Sexual Health Unit. Andrew McCloud from Dunooch Dance troop taught students how to dance. After the camp, eight of the boys got together and presented a dance at Matraville Sports High School.



Introducing Olivia

A Year 9 Aboriginal student from JJ Cahill Memorial High School, Olivia had finally developed a strong sense of belonging and identity after completing programs such as SistaSpeak and the Young Mob Leaders Program.

Her mother, who is part Aboriginal, hardly spoke about her Aboriginality. Through one-on-one support from the Waratah Coordinator, Olivia significantly improved her school assessment and homework performance. Filled with more confidence, Olivia now attends school more regularly and plans to build a career within the veterinary industry when she finishes school.

A huge thank you to the Program Coordinators, AEOs and Principals at each school for ensuring our programs ran smoothly over the year. To the Facilitators who came into the schools to deliver the programs - you were truly exceptional!



Funding for the Waratah and Step Up Links to Learning Programs was provided by the NSW Department of Education and Communities.

THE PLACE PROGRAM

Creating employment opportunities for the homeless

"THANKS TO WEAVE'S PLACE PROGRAM, I TURNED WHAT FELT LIKE A HOPELESS SITUATION INTO ONE WHERE I COULD ACTUALLY FIND A JOB"

Research shows that mental health issues are an enormous obstacle to finding meaningful employment. Under a partnership funded by DEEWR Innovation Funds and managed by TAFE NSW Outreach at Sydney Institute, the program successfully helps the homeless and those at risk of becoming homeless, study and go on to find a satisfying job.

A bold social enterprise, the aim of The Place Program was to:

- Develop an innovative model for sustainable employment outcomes
- Integrate learning with 'hands on' practical experience
- Introduce students to trades-based and sustainable living courses
- Supplement Weave's existing work in this field

BELOW ARE SOME OF THE COURSES WE RAN THIS YEAR:

● INTRODUCTION TO TRADES INDUSTRY

Statement of Attainment Vocational and Community Engagement

Held at the Redfern Waterloo Authority, this short course was designed to give students the required knowledge and skills to participate in the Fair Repairs project at Waterloo Green. Qualified teaching was funded by The Place Program and recruitment and employment support was provided by Housing NSW and Fair Repairs partnership.

● PAINTING AND DECORATING

Statement of Attainment Vocational and Community Engagement

A six-week introduction course held in a boarding house belonging to Cana Communities. Thanks to TAFE Outreach, this course was delivered by Painting and Decorating teachers at TAFE Ultimo.

● INTRODUCTION TO LANDSCAPING

Access to Work and Training

An introduction to site analysis, project planning, garden construction, soil preparation, weed identification, planting natives and transforming community venues in Redfern and Waterloo. This course was funded by the Weave Step Up program and South Sydney PCYC, with grant funding from RWA. In partnership with Housing NSW and MTC workplace solutions, students were given access to quality vocational learning.

● INTRODUCTION TO BUILDING TRADES

Statement of Attainment Access to Work and Training

This ten-week course taught students skills in painting and decorating, white card and basic skills in construction. Run by Redfern PCYC, this course was jointly funded by the Place Program and MTC Training Solutions. Students were given access to three days of quality vocational learning.

61

Program
Participants



JUVENILE JUSTICE PROGRAM

Supporting young people in pursuit of change

"THE NUMBER OF YOUNG PEOPLE IN CUSTODY IN NSW IS DECREASING AND RECENTLY A JUVENILE DETENTION CENTRE CLOSED AT EMU PLAINS. PROGRAMS LIKE OURS HELP THIS PROCESS."

The Juvenile Justice Program was designed to help people in Metropolitan Sydney who have been involved with the juvenile justice system and are on supervision orders, or at risk of offending. A major focus of this program is on indigenous young people who are disproportionately represented in custody, and are generally more disadvantaged.

For the past two decades, Weave has provided intensive community support and built trusted relationships with vulnerable young people - helping them break away from troublesome behaviour and avoid a life in and out of custody.

The crime prevention and re-integration strategies we employ are designed to break the juvenile crime cycle. In particular, we aim to:

- Work towards improving overall quality of life
- Increase access to justice and equality
- Develop strategies tailored to individual needs
- Assist in the development of skills and knowledge
- Cultural awareness, health, fitness and life skills programs

HIGHLIGHTS

- The program has worked with 45 young people during 2012-2013.
- 85% of young people did not re-offend once linked with our program.
- Over 50% received court support, Centrelink support, housing, employment and family support.
- Over 30% were supported for general health, mental health and/or AOD issues and some are currently receiving long-term counselling.
- The majority of young people in the program were supported with access to educational and vocational training services



THE GYM PROGRAM

This year's Gym Program gave young people an opportunity to increase their general level of fitness and participate in a positive activity with their peers. The program also gave Weave the opportunity to engage with clients regularly and develop a more informal relationship.



Introducing Jamie

Jamie is a young Aboriginal man who has been involved with the juvenile justice system from an early age. Having survived ongoing trauma and a challenging family life plagued by mental health issues, Jamie lacked guidance and positive role models throughout his childhood.

Since being referred to our Juvenile Justice Program for intensive casework support, Jamie has benefitted from regular counseling and one-on-one support with reading, writing and maths. A stellar pupil, Jamie graduated from an eight-week intensive course in construction and subsequently secured an apprenticeship with a local Builder. He has happily been in this job for almost a year.

Unfortunately, Weave no longer receives Juvenile Justice funding to provide these services. The program finished up on June 30th 2013. Weave is determined to find funding to continue to provide programs for young people involved with the juvenile justice system.



This program was formerly funded by NSW Department of Juvenile Justice.

WEAVE'S INVOLVEMENT IN JUST REINVEST NSW

Believing in people, investing in communities

45

Program
Participants

ABORIGINAL YOUNG PEOPLE ARE 28 TIMES MORE LIKELY TO BE PLACED IN JUVENILE DETENTION, THAN NON-INDIGENOUS YOUNG PEOPLE. AUSTRALIAN BUREAU OF STATISTICS 2009.

It's a sad fact that is simply hard to ignore. In New South Wales Aboriginal people constitutes only 2.2% of the population, yet over 50% of the young people in juvenile detention in New South Wales are Aboriginal.

Justice Reinvestment is about taking taxpayer dollars out of prisons and instead, re-directing the money into communities that have high rates of disadvantage and crime. A bottom up approach, this reinvested money is used to tailor community programs that address the underlying causes of crime and bring about long-term community benefit.

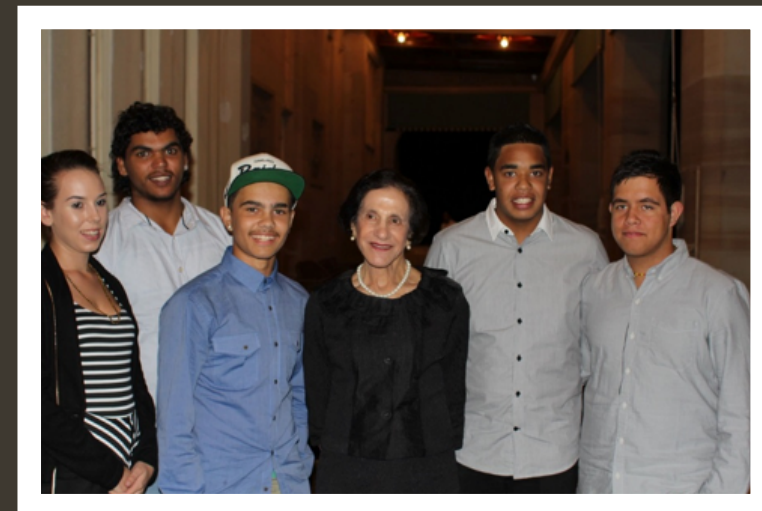
CAMPAIGN LAUNCH

Six Aboriginal young people represented Weave at the campaign launch event at Government House – Trei Stewart made a speech on the night and both Beau Foster and Kobie Duncan performed a rap they had written especially for the occasion. Trei features in the original campaign video, along with Raymond Button, another of Weave's young ambassadors. The duo have also featured in The National Indigenous Times, Koori Mail and made appearances on Channel 7's The Project and SBS News.

(Left) Jessica Brown, Raymond Button, Kobie Duncan, Marie Bashir, Beau Foster and Trei Stewart at the campaign launch at Government House (May 2012).

IN 2011, THE NSW AUDIT OFFICE REPORTED THAT THE AVERAGE DAILY COST OF SUPERVISING AND CARING FOR JUVENILE OFFENDERS IN DETENTION WAS \$652 PER PERSON PER DAY, APPROXIMATELY \$237,980 ANNUALLY.

JustReinvest NSW is campaigning to achieve justice reinvestment for young Aboriginal people. Launched in May 2012 at Government House, the campaign was initiated in response to the shameful over-representation of Aboriginal people, and in particular Aboriginal young people, in detention. Supporters and champions of the campaign include Her Excellency the Governor of NSW, Professor Marie Bashir, Adam Goodes, Justice Michael Kirby, Malcolm Fraser, Gary Ella, Mick Dodson, Tom Calma, Mick Gooda, Nicholas Cowdry.



TUTORING PROGRAM

Educational assistance that improves academic performance

20

Program
Participants

"WHEN I FIRST CAME TO WEAVE FOR TUTORING, I WAS REALLY SHY. I COULDN'T TALK TO ANYONE. HARVEY, MY TUTOR HAS BEEN REALLY NICE AND WE CHAT ABOUT LOTS OF STUFF. MY WORK AT SCHOOL IS HEAPS BETTER, BUT MOST OF ALL I'VE MADE NEW FRIENDS AND FIND IT EASIER TO TALK WITH KIDS AT SCHOOL!"

When school students fall behind in their learning, this can have a serious effect on their personal confidence and ability to develop vital life skills. Most who struggle are too shy to put their hand up and ask for help, for fear of embarrassment.

The Weave Tutoring and Mentoring Program has run successfully for three years, during which time, we have achieved tremendous results. This year, the program brought together 20 students with 20 members of the public. The program aims to:

- Tutor students on a wide range of subjects
- Bring together volunteers from different backgrounds
- Facilitate the exchange of life skills and experiences
- Help students with school homework
- Ensure students catch up on subjects they find difficult



Introducing Malachi

Roe, a volunteer teacher from Alexandria, has been helping Malachi with maths. Meeting for one hour per week, Malachi has been learning about fractions, decimals and percentages.

Tutoring can be a rewarding experience for both the student and the teacher. Roe's work with Malachi helps him re-visit some of the basic concepts of mathematics and refine his skills, before tackling more advanced maths in his future schooling.

"I THOROUGHLY ENJOY WORKING WITH MALACHI. IT GIVES ME A GREAT SENSE OF SATISFACTION WHEN I SEE HOW HIS CONFIDENCE AND SKILL LEVELS HAVE INCREASED. HE IS SO EAGER TO LEARN." ROE, VOLUNTEER TUTOR

The Tutoring and Mentoring program is run on a particularly small budget. We therefore extend a big thank you to our Volunteer Tutors, Student Placement Research Team and all those who have assisted with facilitation and administration. We also openly welcome anyone who feels that they have something to add to the program.

A heartfelt thank you to Rebecca Wallace at Launch Recruitment. Her generous \$5000 donation has enabled us to review and refine our program and provide extra support until March next year.

STREETBEAT SAFETY AND CRIME PREVENTION PROGRAM

Providing a safe ride home

IT FEELS SO GOOD TO HEAR SOMEONE SAY, "TAKE CARE", BUT IT FEELS SO MUCH BETTER TO HEAR SOMEONE SAY "I AM THERE TO TAKE CARE OF YOU"
FACEBOOK COMMENT

Streetbeat is a safe, late night transport service and daytime outreach program that circulates where young people hang out. The program has successfully minimised the risks of anti-social behaviour towards young people and the community, by picking up passengers and transporting them home, or to another safe place.

Streetbeat is a less intimidating option than the emergency services. Run by one paid coordinator and many wonderful volunteers, the program helped 130 regular riders travel safely this year. Approximately 95% of these were Aboriginal.

The Streetbeat program provides:

- Safe transportation home late at night
- Food and first-aid to young people
- As needed transportation to hospital and refuges
- Referrals to daytime specialist services and counselling

Introducing Jarred

Jarred started using the Streetbeat bus at the young age of ten, during a period of difficulties at home. He began staying out late, to avoid returning home. Streetbeat volunteers had built a trusted relationship with Jarred. They identified that his problems were serious enough to intervene and put Jarred in touch with additional services. Years later, Jarred tells us that he is re-housed, living with his adult sister, and happy.

Streetbeat is supported by a committed and experienced team of volunteers. These volunteers are vital to the delivery of these services and are tremendously valued by Weave and the young people who use the bus. We thank them sincerely.



PARTNERSHIP WITH BARNARDO'S

In November 2012, Streetbeat formed a partnership with the Canterbury and Marrickville branch of Barnardo's. The partnership has already proved highly successful in providing more young people with direct access to local services available through Weave, in the Glebe and Waterloo area.

Since the partnership began, a Barnardo's Outreach worker accompanies the Streetbeat Bus every Friday night, to meaningfully engage with local young people who use the service. The same worker also co-facilitates a community BBQ on Thursday afternoons in Marrickville South, an area well known for high levels of disengagement. These informal gatherings have significantly improved interaction and the scope for Outreach intervention.



STREETBEAT CASEWORK AND COUNSELLING

Providing Aboriginal young people with practical support and a safe place to talk

AT THE TIME OF THE 2011 CENSUS, 60% OF HOMELESS PEOPLE WERE AGED 35 AND UNDER.

The Streetbeat Casework and Counselling program can mean the difference between homeless struggle and somewhere to live for many young people. Offering those in need a positive plan for the future, the program works with Aboriginal young people between the ages of 12 and 18, specifically targeting those who are, or at risk of, alcohol misuse, drug misuse and/or homelessness.

With help from Counsellor & Caseworker Heather Coull, three clients were approved for priority housing, four clients enrolled in a TAFE course, two were helped off the streets and into accommodation and five clients were supported through pregnancy and child birth.

This program provides limited funding for the provision of basics, including meals, baby items, birth certificates, photo ID, school and work clothing, education fees, rental bonds, furniture, medical costs and transport. We welcome help wherever it's offered.

This year, the program worked intensively with 50 Aboriginal young people in the provision of intensive case management, outreach and counselling.

Introducing Anna

Anna turned to Weave during a time where her mother and father were suffering from mental health issues and drug addiction. Unable to provide her with the support she needed, Anna had chosen to be homeless, rather than live in a violent and difficult family environment.

Anna became pregnant and was living in unsuitable conditions that would keep neither her, nor her baby safe. She wanted her baby to have a more positive upbringing than her own and was determined to resolve her housing crisis.

With the help of the Streetbeat program, Anna applied for Priority Housing. Whilst waiting for the housing, Anna was referred to a young parent's accommodation service and was accepted into the program.

With the help of stable refuge accommodation, Anna was able to attend parenting programs, successfully gain her Year 10 certificate and learn to drive. Six months after her application for Housing NSW accommodation, Anna was allocated a cosy flat in Surry Hills. Today, she is a happy mum, taking care of her baby in a safe and loving environment.

Funding for both the transport and case management components of the Streetbeat service is provided by Family and Community Services NSW's "Getting it Together" program.



KOOL KIDS CLUB

Helping Aboriginal kids to stay in school and become leaders

Kool Kids Club is a prevention and early intervention initiative that provides free after-school and holiday activity programs in La Pouse and the surrounding areas.

The program supports the development of well-being, resilience and life skills for children and young people. It serves to build on children's strengths and enhance connection with their community, culture and own family.

This year, Kool Kids Club facilitated 232 individual programs, working with over 150 children and young people in the Randwick LGA. Specifically:

- 184 individual term programs
- 40 holiday programs (including four camps)
- 128 leadership program opportunities (high schoolers)
- 25 casework and extra support cases

Introducing Tori

Victoria (or Tori to those who know her), was a member of Kool Kids Club for five years. At the age of 14, Tori proudly became part of the very first group of Switch Leaders.

Switch Leaders are inspirational role models and mentors to children enrolled into the Kool Kids Club. Wanting to excel in her role, Tori soon became the MC for the Switch Leader fundraiser, speaking with confidence and pride in front of 100 community elders, parents, services and young people. Getting into her groove, Tori was chosen to speak at Parliament House, to effectively get across the Kool Kids Club message and seek much needed funding.

"TORI IS WELL-KNOWN FOR HER HUMOUR, INTELLIGENCE AND AN INFECTIOUS SMILE THAT LIGHTS UP THE DARKEST OF ROOMS. TORI IS ALWAYS THE FIRST TO ANSWER THE

CALL FOR HELP WITH FUNDING AND OFTEN DOES MORE THAN WHAT IS ASKED. SHE HAS AN ENORMOUS FUTURE AHEAD OF HER AND KOOL KIDS CLUB IS PROUD AND HONOURED TO HAVE HER."

PAUL COLEMAN, ACTIVITIES WORKER

Kool Kids Club could not have achieved such major wins this year, without the support of Bendigo Bank, Vincent Fairfax Family Foundation, Jewish Aid, All Sorts Gym and Indoor Sports Centre, Randwick City Council, Housing NSW and NSW Family and Community Services.

Small grants were also received from QBE, NRMA Insurance, Maroubra Seals, Ann and Ted Robinson, The Healing Foundation and United Way.



Due to the hard work of Weave staff, Kool Kids Club members had access to up to 42 programs each. This translates to one program per week each school term and two holiday programs during each holiday period. 85% of the children participating in this program are Aboriginal.

HIGHLIGHTS

- Commendation award from NSW Parliament
- Winner of NRMA People's Choice Award
- Decoration of the Kool Kids Bus with Kool Kids Art
- Youth Led community fundraising night (attended by over 100 community members and supporters)
- New partnerships formed with AFL Australia, Jewish Aid, Yarra Bay Sailing Club, Sydney Story factory, Surfing NSW and Bangarra dance company
- Presentation by Kool Kids team and Switch Leaders at NSW Parliament House
- Participation by Kool Kids Switch Leaders in the Just Reinvest NSW campaign
- Two Aboriginal Salt Water Dreaming Camps
- Switch Leadership program with 19 young people working as peer mentors each term.
- First ever Switch Leadership Camp
- Namatjira Community Mural and two community garden projects
- Facilitation of community stalls at Daceyville 100 Years of Housing celebration, Naidoc week and Duffy's Park family fun day
- Entry of two short films into Trop Junior (one on cultural identity, the other about the KKC Aboriginal Surfing program)
- Production of a "Choose your own adventure" book on saying "no" to racism at the Sydney Story Factory, published and distributed to local schools
- Boomerang Auction in partnership with All Sorts Gym, bringing Aboriginal artists, parents and sports stars from all over Australia together to paint boomerangs
- Year 6 transition program for 19 girls and boys (facilitation of a transition pathways Camp at Yarramundi, through partnership with Jewish Aid)
- New high school Youth Connect Surf, Boxing, Sunday Sailing and Drumming program
- An Annual Christmas party for over 100 children and families
- Provision of gifts for every child and hampers for every family, courtesy of United Way for Christmas





WEAVE WOMEN AND CHILDREN'S CENTRE

Empowering women to take control

"VIOLENCE AGAINST WOMEN IS A SERIOUS PROBLEM IN AUSTRALIA. AT LEAST ONE WOMAN IS KILLED EVERY SINGLE WEEK, BY A CURRENT OR FORMER PARTNER."
WHITE RIBBON.

Far too often, Weave is approached by women dealing with problems such as homelessness, domestic and family violence, parenting issues, financial hardship, legal matters and social isolation.

The Centre provides a range of services including:

- Information and Referrals
- Counselling and Casework
- Parenting Programs
- Playgroups
- Education Programs

A key strength of the Centre is the ability to offer women and families a flexible and seamless service.

With the help of seven wonderful workers, the Centre runs two primary programs:

THE EARLY INTERVENTION AND PREVENTION (EIPP) PROGRAM:

This program provides support to families with children up to the age of 13 via casework, case management, counselling and group work.

REDFERN STAYING HOME LEAVING VIOLENCE (SHLV) PROJECT:

This specialist program helps women remain in their home of choice, whilst leaving behind a violent relationship. The project provides counselling, medium to long-term casework and brokerage to fund safety equipment and upgrades. Staff work in partnership with Housing NSW, WDVCS and Redfern Police.

"I ATTENDED THE CENTRE'S PARENTING PROGRAM AND NOW MY BUB IS SLEEPING RIGHT THROUGH THE NIGHT. I NOW REALISE THE BENEFIT OF A GOOD ROUTINE!"

124
intensive
support
2,000
one-off
support

Over the
past 12 months,
we have provided case
management support to over
124 individual women and
families, counselling services to
30 clients and assisted with
over 50 drop-ins per
week.

Introducing Emma

Emma came in to see us early in her pregnancy and in search for suitable accommodation. Having grown up in and out of care homes, she was determined to raise her child in the best possible way and without the involvement of Community Services.

Emma had worked tirelessly over the past six months. Through Weave and help from other agencies, she was able to make huge lifestyle changes.

Later, Emma agreed to be part of a South East Sydney Illawarra Area Health Services pilot program, designed to help mothers resolve issues prior to the birth of their children. Her beautiful, healthy baby boy was born in November. Emma and her little boy are housed in a new unit provided by Red Cross and are starting their new lives together. It has been an inspiration and a privilege to have been part of Emma's journey.

HIGHLIGHTS

- Parenting Groups – we ran a series of successful parenting groups, including Triple P Positive Parenting Program and five Playgroups.
- Sing & Grow - this popular program for mothers and pre-school children saw 10 mothers and 14 children enthusiastically participate in songs, music and dance over a 10-week period. The Centre was filled with family, music and laughter.
- Etsy Art Group – this project was just one of the education projects run at the Centre this year. After the closure of the Weave Art Centre in Wilson St, many artists felt at a loss. A group of five female artists participated in the program, learning the necessary computer and Internet skills to create their own online shop. They now have a place to showcase and sell their artwork to people across the globe.
- First Aid Course - the Centre ran a child-focused First Aid course in partnership with TAFE. Eight mothers and mothers-to-be attended and gained certification on completion of the course.
- English Classes for Women - with funding from the new Federal PATCE (Productive Ageing through Community Education) grant, we were able to recommence these classes. The classes are held on Wednesday mornings, with 6-10 delighted women engaged and ready to refine their English skills.
- Counselling Program – this year, clients received flexible and responsive counselling, using a wide range of clinical frameworks designed to help clients explore their concerns, challenges and hopes.

A big thank you to supporters Cohort Digital who yet again arranged Christmas presents and a visit from Santa, Fay Greig for the beautiful hand-made baby items and donations, and Oz Harvest for providing our clients with fresh fruit, vegies and other much needed food.

Funding for this program is provided by Family and Community Services NSW



KOORI ACCESS POINT (REDFERN & LA PEROUSE)

Support and services for Indigenous Australians



This program is designed to help Aboriginal people access appropriate information and services, in a timely and supported way. We have workers in both Redfern and La Perouse.

The program is designed to support Indigenous community members by providing links and referrals to a range of mainstream and Indigenous services in the areas of:

- Welfare and Social Support
- Employment
- Family Violence
- Health (including drug and alcohol services)
- Legal Assistance
- Childcare
- Housing

Delivered across two locations, Redfern (based at Weave) and La Perouse (based at La Perouse Aboriginal Lands Council), the program reached over 3,000 Aboriginal people, delivering information to individuals and through group information sessions. The Redfern program supported approximately 125 clients and La Perouse supported 152, many returning for ongoing help throughout the year.

A unique aspect of the program is the capacity to work with individuals who wouldn't normally access services - particularly men over 25 for whom, male-specific services do not exist.

This year, with assistance from Pyrmont Cares and the Coastal Sydney Aboriginal Tenancy Service (Mission Australia), 32 individuals were successfully assisted with essential household goods, tenancy concerns, relocations, housing and/or tenancy advocacy issues.

Thanks to our collaborators Koori Radio, Babana Aboriginal Men's Group, Inner West Medicare Local, The Aboriginal Medical Service, Redfern Centrelink, The Redfern Community Centre, The City of Sydney Council, Neami (Aboriginal Homeless Outreach), FaCS and Tribal Warrior and Downing Centre Local Court.

Lapa Access Program

The Indigenous Community Links (ICL) worker for La Perouse delivers Outreach services to Centrelink, Maroubra Housing and Waverly Courts.

Under this program, Aboriginal people with a wide range of needs are referred to relevant support programs that we have identified as being appropriate, reliable, culturally sensitive and responsive. The ICL worker has so far been involved with two Weave camps - the Kool Kids Club Surf Program and the Waratah Cultural and Leadership Camp.

Both camps concentrated on providing children and young people with cultural programs that helped celebrate Aboriginal identity. They each attracted a large number of Koori kids, all of whom were thrilled to share their own stories, outside of the classroom.

Community Drug Action Team (CDAT)

The CDAT committee, in partnership with the La Perouse Community Alliance Committee, this year delivered a community ICE Methamphetamine Forum. The forum served to educate and advise the community about the health effects of ICE, and empower and educate the community on strategies to deal with this drug problem. The committee has successfully linked the key agencies and services to the forum.

The ICL worker also attends the La Perouse Alliance group and the La Perouse Interagency.

WE THANK OUR PARTNERS FOR THEIR SUPPORT AND COLLABORATION:

La Perouse Youth Haven
La Perouse Aboriginal Lands Council
Centrelink Redfern and Maroubra
Housing NSW Maroubra
Redfern Community Centre
Randwick City Council
Department Aboriginal Affairs
Eastern Beaches Local Area Command (Maroubra Police)
FAHCSIA
SESIAMS Aboriginal health workers
La Perouse Men's Group.
Gurriwal Respite Service
Centrelink Maroubra Office
Waverley Courts
Attorney Generals Department
Mission Australia



OUR HISTORY

"WE SPEAK OUT ABOUT JUSTICE AND FAIRNESS, SO THAT WE CAN LIVE IN A MORE INCLUSIVE, CREATIVE AND VIBRANT AUSTRALIA."

Weave has been an integral part of the Redfern Waterloo community since 1976. Established by a group of local parents concerned about young people on the streets at night, our organisation started as an outreach and street work program helping young people with drug use issues. It has since grown into one that employs 35 staff members and delivers high-impact, quality services and support to those who need it most.

In 1993, our organisation was incorporated as an association and went on to receive charity status in 2001.

NAME CHANGE

Until two years ago, Weave Youth and Community Services was named South Sydney Youth Services. This did not however, do justice to the full range of services we provide and the decision was taken to change our name.

We felt it was important to involve our own clients in the name change – after all, it is our clients who can best articulate how our work changes lives. After lots of discussion and the running of a competition, the new name was decided. Charlotte Edwige, a local 11 year old had put forward the name 'Weave'.

We believe that the name Weave reflects the complexity of life and the multiple strands that hold us together. Sometimes, these strands need to be strengthened. The word Weave also represents the many integrated programs we provide and the way our clients are able to weave in and out of support, as and when they need it. Weave is about connecting young people, families and the wider community and strengthening the bond that helps reduce sadness and isolation.

Each thread is enriched and strengthened through the work we do and the relationships we build. We acknowledge, understand and celebrate the lives that come together in a complicated rich weave.

AWARD-WINNING REFURBISHMENT

On 11 August 2012, Weave's new facility on our old turf at Waterloo Oval was officially launched by the Lord Mayor Clover Moore.

The building project took five years to come to fruition and cost 2.6 million to complete. It was funded generously by the Federal Government, City of Sydney and funds raised by Weave. The new building gives Weave dedicated counselling spaces, large meeting facilities and a rooftop garden too. Those who come in to see us, acknowledge our new facility as a colourful

and vibrant space that appropriately reflects the work we do.

Designed by Architect Huw Turner, the refurbished building has attracted much interest and admiration.

"THE REFURBISHED BUILDING HAS ADDITIONALLY BECOME AN EXTENSION OF ITS LANDSCAPE SETTING, COMBINING ARCHITECTURE AND HORTICULTURE IN A UNIQUE WAY TO CREATE A NEW SCULPTURAL FORM THAT ENLIVENS THE SOUTHERN AREA OF THE WATERLOO OVAL SITE. WHERE POSSIBLE, ELEMENTS OF THE EXISTING AMENITIES BLOCK STRUCTURE HAVE BEEN RETAINED AND RE-USED IN THE NEW PLAN, NOW FOCUSED AROUND A NEW CENTRAL COURTYARD AND CROWNED BY A PLANTED ROOF STRUCTURE."

THE LANDSCAPED ROOF GARDEN IS VEILED BY A DRAMATIC STEEL CANOPY STRUCTURE THAT HAS BEEN DESIGNED TO SUPPORT A VARIETY OF NATIVE CLIMBING AND FRUITING PLANTS. THE CANOPY IS STAR-SHAPED IN PLAN - THE POINTS OF THE STAR MARK THE ENTRY AND NEWLY CONSTRUCTED BAY WINDOW AREAS IN THE FOUR CORNERS OF THE BUILDING. THE BUILDING IS ALSO PARTIALLY SUBMERGED IN ITS SETTING, AS A RESULT OF SUBTLE ADJUSTMENTS IN THE ADJACENT LANDSCAPE LEVELS, REDUCING ITS APPARENT SIZE."
HUW TURNER, ARCHITECT

This project would not have been possible without the support of Lord Clover Moore, Monica Barone and their team. We thank everyone involved for their hard work and support.



GOVERNANCE

THE BOARD

The Board is the driving force behind the strategic direction and policies implemented at Weave.

Each Board member contributes to Weave on a voluntary basis. No fees are paid to Board members for attending meetings, reading papers, sitting on Committees or representing Weave at external meetings.

Board members are elected each year at the AGM and meet on a bi-monthly basis, unless a special meeting is convened. There were seven board meetings during 2012/2013.

THE 2012/13 BOARD MEMBERS WERE:



LINDON COOMBES BA, Diploma of Aboriginal Studies (Co-Chairperson)

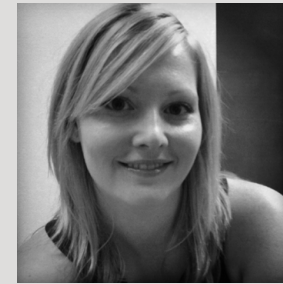
Lindon is a proud Aboriginal man, whose family comes from Brewarrina, North West NSW. Lindon has worked in Aboriginal Affairs for the NSW Government for over a decade, tackling issues on culture and heritage, natural resource management, education, child sexual abuse and the oversight of the NSW Aboriginal Land Council system.

Throughout his career, Lindon has also worked for ATSIC, spending a number of years as Senior Policy Advisor to successive Ministers holding the Aboriginal Affairs portfolio. He was recently the Executive Director of Australia's oldest Indigenous education provider, Tranby Aboriginal College in Glebe, and is now the CEO of the National Congress of Australia's First Peoples.



LOUISE WAGNER BSocSci, MPM (Co-Chairperson)

Louise has worked within the public sector for over 15 years. During this time, she has held a range of roles in both the Commonwealth and State Governments, including Advisor to a member of the NSW Upper House and Ministerial Policy Advisor for the NSW Government. Louise has worked on employment and training policy development, program delivery in the Department of Employment, Education and Training and the Redfern-Waterloo Authority. She has a Masters in Project Management.



ALISHA METE BBA (Secretary)

Alisha joined Weave's Board in June 2012, bringing a wealth of experience in community partnerships and development across both corporate and not-for-profit sectors. Alisha is passionate about corporate citizenship, sustainability, social leadership and about bringing the corporate and not-for-profit sectors closer together, to deliver better outcomes for the community.

Alisha has worked with Earth Hour Global (WWF), Sydney Opera House and APN Outdoor in various partnerships, communications and brand marketing roles. She currently works as a Corporate Responsibility & Sustainability Advisor for Bupa Australia, delivering community and charity partnerships, employee volunteering, fundraising and workplace giving programs. One of her many achievements to date was her development of the I Do Day campaign, in partnership with Australian Marriage Equality. Alisha is currently a student of the Centre for Social Impact at the University of New South Wales.



FRANCIS HARRIS BEcon, CPA, AICD (Treasurer)

Francis is a Certified Practicing Accountant, with 14 years' experience within banking and finance and for the past three years, the not-for-profit sector. Francis is currently Head of Finance for the Children's Cancer Institute for Medical Research. His expertise lies in strategic financial management, accounting and financial operations, budget development and people management. Francis is the current Treasurer for Weave.



RHONDA DIXON GROVENOR Masters in Aboriginal Studies

Rhonda is a Darug/Yuin elder and A grandmother of ten, living in the Sydney area. For the past 20 years, Rhonda has facilitated healing for Aboriginal and Torres Strait Islander people through Arts Programs that apply both Traditional and Contemporary stories to arts, craft, dance and song.

Rhonda is engaged by the Mental Health Association to assist in making the Grief and Loss program culturally appropriate. She is also a Mediator and Trainer for the Department of Attorney General's Grief and Loss program for Seasons for Growth. Rhonda is currently involved in establishing a Memorandum of Understanding with other Aboriginal organisations. She recently completed her Masters in Aboriginal Studies (Social and Emotional Wellbeing) at Ginibi Aboriginal College, Southern Cross University.



ANTHONY NANTES BA, BSC, MBA

Anthony has performed a wide variety of Senior Executive and Director level roles within many organisations worldwide. He is highly experienced in Management Consulting, Project Management, Integration projects related to Mergers & Acquisitions and Strategic Leadership, in both the profit and non-profit sectors. Anthony's strengths include dynamic leadership, analytical skills, a strong commitment to results, excellent governance and management skills.

Today, Anthony is a Consulting Director with UXC, Australia's premier IT Management Consulting firm. He is regularly invited to present and impart his wisdom at International conferences. He was the Founder of Young Professionals for Charity, an organisation with 200 young professionals, each committed to developing long-term strategic relationships between early-mid career professionals and the not-for-profit sector.



PRUE RHEUBEN BSW

Prue has worked within the community sector for 14 years, across a range of different settings including non-government organisations and the University of NSW Community Development Project. Whilst working predominantly in the area of community development, her roles have also included case management, counselling, training and event co-ordination. She also worked as Student Counsellor at the University of Technology over a period of ten years.

Prue is currently Assistant Manager with Surry Hills Neighbourhood Centre. She also supervises social work students on practicum and guest lectures on community work at the UNSW. Prue is on the Board of a number of non-government organisations and taskforces that serve to assist the Waterloo & Redfern communities.



PENNY ROWLAND DipBA

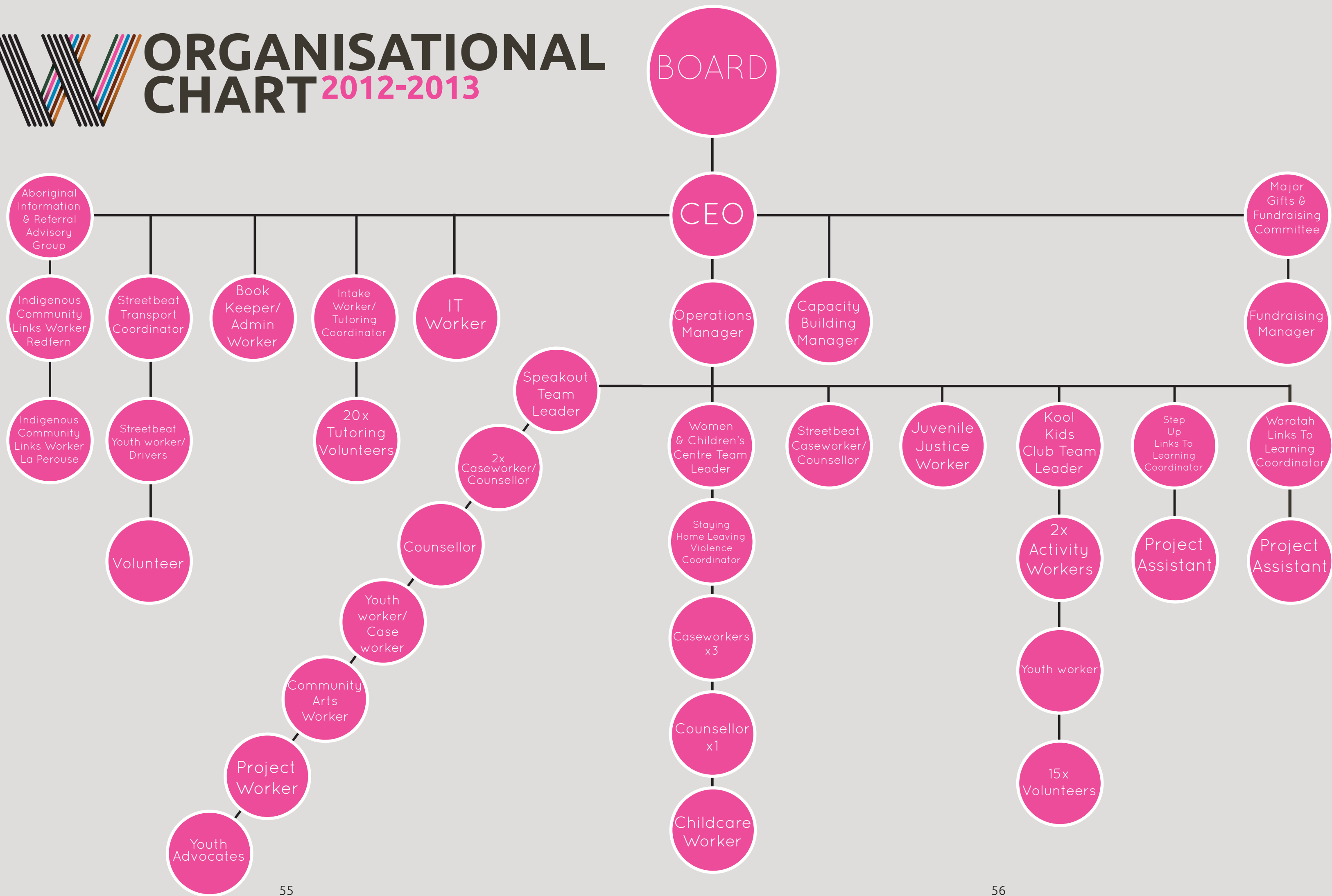
Penny is a senior Marketing and Communications specialist, with experience across some of the biggest global entertainment businesses, including EMI, Virgin, Capitol, Sony and Village Roadshow. As GM, Marketing of EMI Music Australia, Penny has led large scale marketing campaigns, digital and content strategy, communication programs, brand initiatives and contributed to International marketing teams.

Recognised for her ability to turn ideas and vision into commercial success (Coldplay, Robbie Williams, Silverchair, Missy Higgins, Lily Allen, Angus & Julia Stone), Penny spearheaded a significant cultural shift, launching EMI into the digital world whilst at the same time, reinventing the marketing and communications function at a time of major industry upheaval. Penny participated in the UNSW AGSM MBA program, where she specialised in IT Strategy and Change Management. She was recently Head of Brand and Precinct Marketing for Sydney Opera House.





ORGANISATIONAL CHART 2012-2013



CORPORATE GOVERNANCE FRAMEWORK

An independent, non-government organisation, Weave is driven by a team of Board members who are responsible for establishing broad policies and strategic direction. The 2012/13 Board members are listed on pages **51-53**.

Working closely with the Board, The CEO is responsible for the day-to-day management of Weave, subject to, and in accordance with, policies and strategic plans established by the Board. The Director has a performance agreement with the Board and is supported by an Operations Manager and Capacity Building Manager, each of whom report to the CEO.

CORPORATE PLANNING

Weave develops a Strategic Plan every three years. The current plan focuses on the areas of organisational development, human resources, governance and infrastructure. The Board is currently developing a framework for improved management and has employed Jennine Blundell Consulting to assist. Thank you to Jennine for her pro bono work.

ETHICAL BEHAVIOR

We take our position of trust within the community seriously and therefore work hard to ensure our organisational values of performance, optimism and fairness are upheld, day in and day out.

FINANCIAL MANAGEMENT

Weave maintains strong financial control over all activities, ensuring that financial responsibilities are met at all times and that the organisation continues to deliver efficient services to the community.

Detailed monthly financial reports are distributed to all team leaders, enabling each team to closely track performance against budgeted income and also monitor associated revenue and expenditure trends. Detailed bi-monthly financial reports are provided to the Board.

Weave maintains a funding reserve each year, to cater for unexpected expenditure or revenue reductions that may arise. Audited financial statements are available on request from Weave.

FINANCIAL PERFORMANCE

Over the past two years, revenue has been steady. Income for the 2012/13 financial year reached a total of \$2.265 million, helped by an increase in philanthropic funding. A copy of Weave’s audited financial statements is available on request.

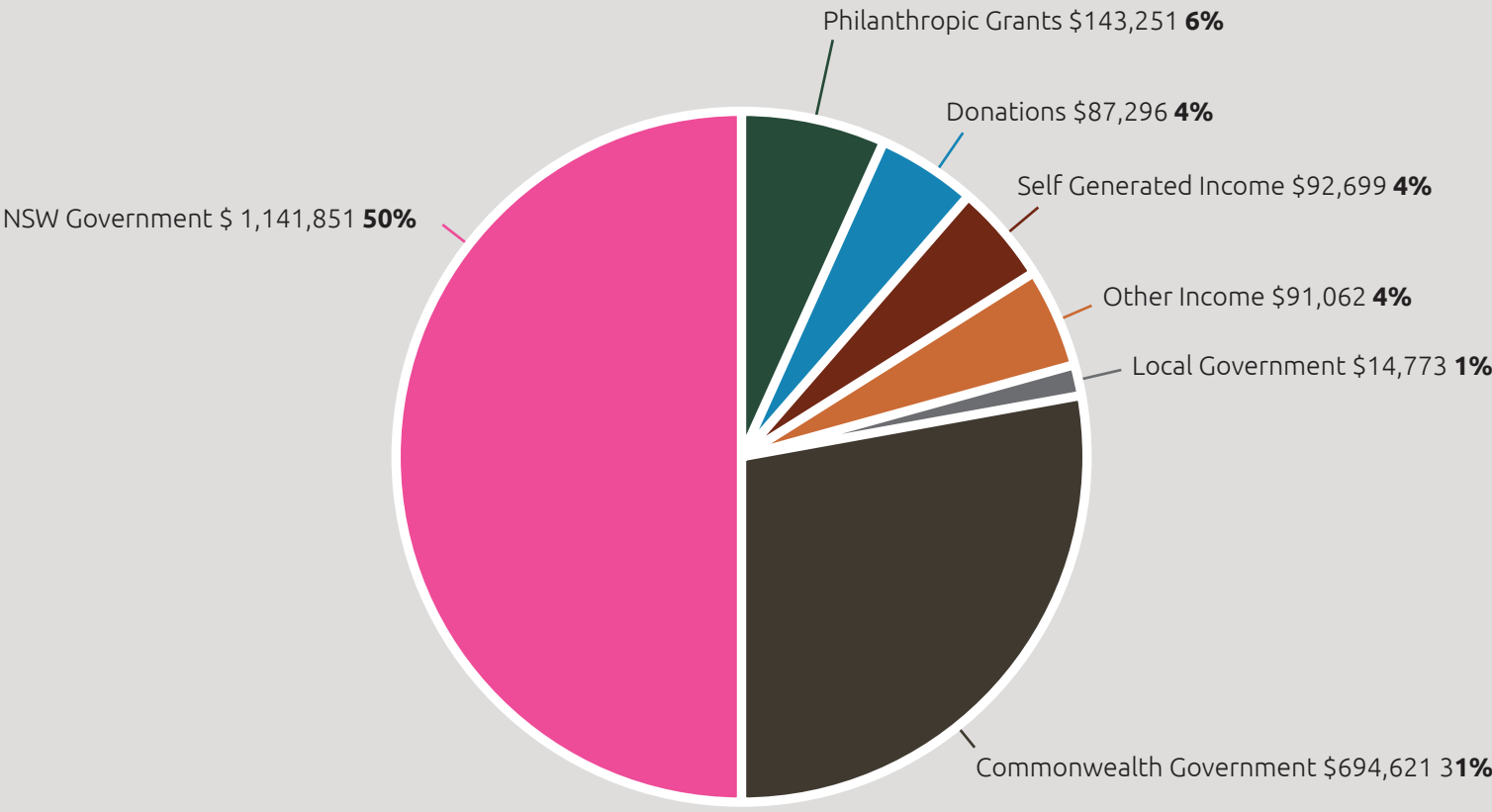
Funding sources are primarily the NSW Government, Commonwealth Government and donations received from corporate and individual supporters.

2012/13 FUNDING SOURCES

The below chart illustrates the amount of funding derived from each source:

WHERE OUR FUNDS CAME FROM

	2012/2013	
	\$	%
Philanthropic Grants	143,251	6%
Donations	87,296	4%
Self Generated Income	92,699	4%
Other Income	91,062	4%
Local Government	14,773	1%
Commonwealth Government	694,621	31%
NSW Government	1,141,851	50%
TOTAL INCOME (Estimated For Audit)	2,265,553	100%



GRANTS WERE RECEIVED FROM THE FOLLOWING ORGANISATIONS:

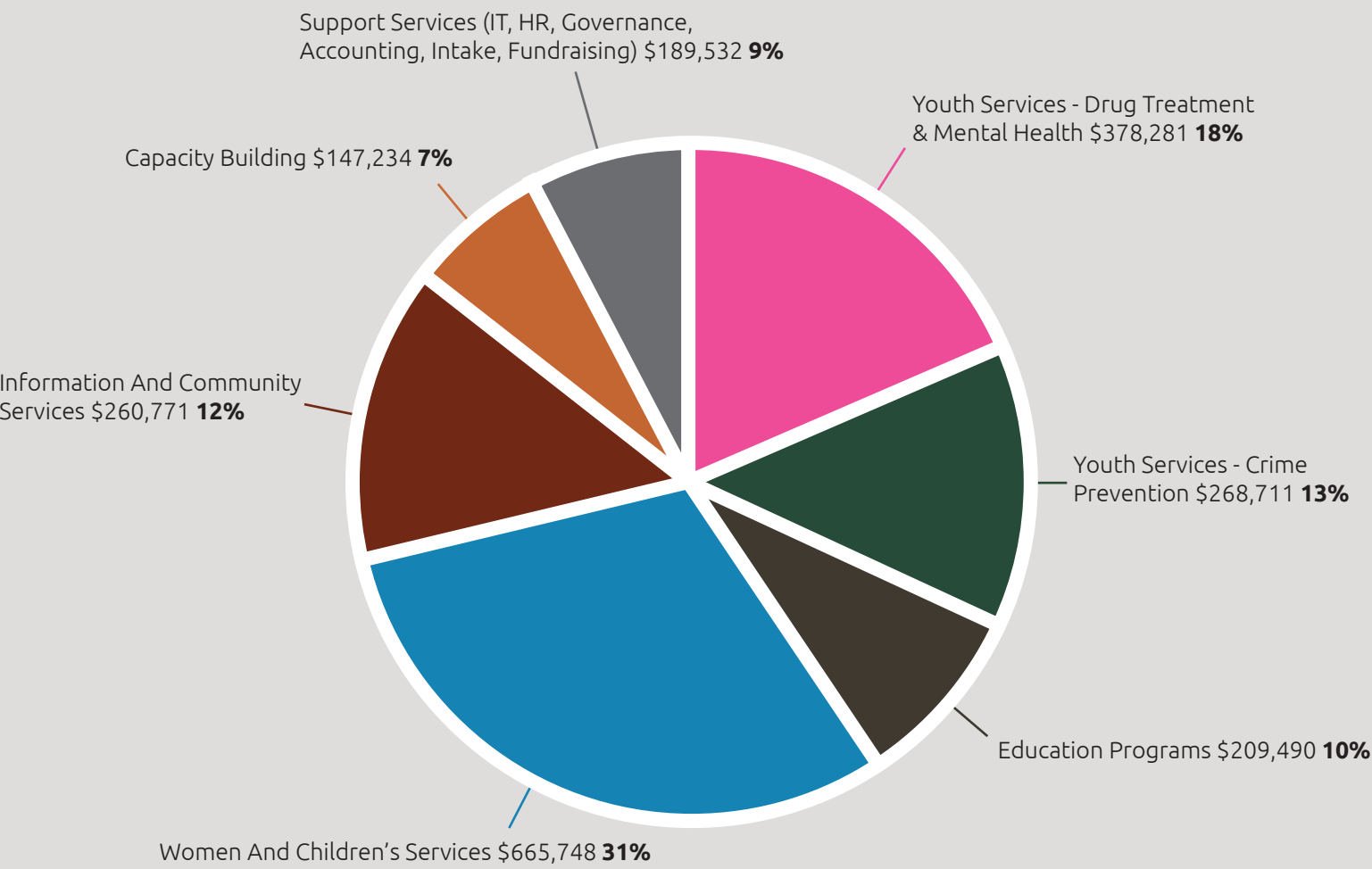
- DoHA: Commonwealth Department of Health and Ageing
- FaHCSIA: Commonwealth Department of Families, Housing, Community Services and Indigenous Affairs
- DJJ: Department of Human Services - Juvenile Justice
- DET: NSW Department of Education and Training
- FACS: Department of Human Services - Community Services
- TAFE NSW: Sydney Institute
- NADA: Network of Alcohol and other Drug Agencies

2012/13 Spending

The below chart illustrates how funding was allocated throughout the year:

HOW WE SPENT OUR FUNDS

	2012/2013	
	\$	%
Youth Services - Drug Treatment & Mental Health	378,281	18%
Youth Services - Crime Prevention	268,711	13%
Education Programs	209,490	10%
Women And Children's Services	665,748	31%
Information And Community Services	260,771	12%
Capacity Building	147,234	7%
Support Services (IT, HR, Governance, Accounting, Intake, Fundraising)	189,532	9%
	2,119,827	100%



OUR FRIENDS, SUPPORTERS & PARTNERS

Weave appreciates, values and thanks all donors, volunteers and advocates.

OUR GENEROUS IN-KIND SUPPORTERS INCLUDE:

- Allsorts Fitness and Wellbeing Centre
- AMP
- Deepend Design
- Derivan
- Foxprint Solutions
- Telstra
- VANS
- Walker Books
- DDB Group Sydney

OUR KOOL KIDS CLUB SUPPORTERS INCLUDE:

- All Sorts Gym & Indoor Sports
- Bendigo Bank, Clovelly
- NRMA
- QBE Foundation

OUR BUSH CIRCLE PROJECT SUPPORTERS INCLUDE:

- Anaconda, Moore Park
- Jamieson Parks Paddle, Narrabeen
- NSW National Parks and Wildlife Service

Partners

WEAVE IS PROUD TO HAVE ESTABLISHED PARTNERSHIPS WITH A WIDE VARIETY OF SERVICES THAT PROVIDE ASSISTANCE TO INDIVIDUALS:

- AMP
- Attorney General's Department
- Bunnings
- Concord Psychiatric Unit
- Child Abuse Prevention Unit
- City of Sydney
- City West Housing
- Downing Centre Local Court – Indigenous Community Links
- Eastern Sydney Area Health Service Sexual Health Unit, La Perouse
- Green Square Growers
- Jewish Aid
- Law Access
- Missenden Psychiatric Unit
- Optus Rock Corps
- South Sydney Community Transport
- Surfing NSW
- The Benevolent Society
- The Settlement
- Valerio De Simoni Association
- White Lion

PARTNER SCHOOLS AND EDUCATIONAL INSTITUTIONS

- Alexandria Park Community School
- Chifley Primary School
- Gadigal Information Service
- Green Square School
- JJ Cahill High School
- La Perouse Primary School
- Leichhardt High School
- Matraville Sports High School
- Nura Gilli
- Soldiers Settlement Primary School
- TAFE Outreach
- UTS Aboriginal Unit

INDIVIDUAL DONORS AND SUPPORTERS

- Alisha Mete
- Anthony Nantes
- Carla Cotter
- Claire Hooper
- Helen Dawken
- Kate Cotis
- Lea Drake
- Maria Rankin
- Megan Roberts
- Monica Trapaga
- Patricia Boyle
- Peter Skelton
- Ross Steele and Julia Ryan
- Sarah Waterson
- Shari Sebbens
- Tamara McKee
- Tom Calma

PHILANTHROPIC AND CORPORATE DONATIONS AND SUPPORT

- Abbots Hotel, Waterloo
- Allsorts Fitness & Wellbeing Centre
- AMP Foundation
- Archibald Williams
- Bupa Health Insurance
- Bendigo Bank, Clovelly
- Clovelly Seniors
- Cohort Digital
- DDB Design
- Deepend Design
- Derivan Matisse
- Hourigan International
- Jamieson Park Paddle
- Jewish Aid
- Launch Recruitment
- United Way

LOCAL GOVERNMENT SUPPORT

- City of Sydney
- Marrickville Council
- Randwick Council
- Redfern Community Centre

LOCAL BUSINESS SUPPORT

- Anaconda
- Master Meats, Marrickville Metro
- Telstra Tiger Team

Conferences, Seminars and Publications

CONFERENCES

2013 Secretariat of National Aboriginal and Islander Childcare Conference (SNAICC)

Held in Cairns, this conference was attended by Katrina Ball from the Kool Kids Club with generous sponsorship from The Benevolent Society, who work alongside Weave in supporting Aboriginal families.

5th Annual Art and Good Health and Wellbeing Conference

Our Speak Out Arts volunteer has lodged an abstract to present at this International arts and health conference, held at The College of Fine Arts during October.

2013 Australian Youth Affairs Coalition Conference

Three young people representing Weave were selected to give a presentation on Justice Reinvestment at this Adelaide conference, held on 5-7 August 2013. Speaking about what Justice Reinvestment personally means to them, the young people were accompanied by two Weave staff members and a volunteer to help them prepare for the presentation. All Weave representatives were subsequently invited to attend the National Youth Awards ceremony.

2013 Australian Somatic Psychotherapy Association (ASPA) Conference

Merle Conyer attended this conference to present on Ripples in the Pond: The Therapist’s Role in Consciousness Shifting.

Publications

- Speak Out (young people and mental health)
- Our Place (good practice youth work with Aboriginal young people)
- Weave Koori Calendar 2012/13
- Kool Kids Club Calendar 2012/13

Past Achievements

Weave has contributed to the community in the South Sydney area for over 30 years. Some of the highlights over this period include:

- Establishment of a well-recognised education program for early school leavers, with many young people subsequently passing their HSC and securing good jobs. This program has been ongoing for fifteen years.
- Pioneering of a range of education programs in 1990 that included anti-racism, anti-homophobia, the production of a video and implementation of a cultural awareness program for Indigenous young people.
- Developing a state-wide training program with young people around safe sex practices in 1995. A diary called “The Making Sense of Sex Diary” was produced as part of the program.
- Assisting in the development of a Safe Sex and HIV awareness campaign with young people, who in turn, wrote and produced a video that was distributed state-wide.
- Mounting a major photographic exhibition in 1996, of young people working. Exhibition participants received major recognition from the local community.
- Implementing a project in 2002 called “Youth Matter”, an innovative, collaborative community project that focused on the ideas, issues and dreams of young people and families in the Redfern/Waterloo area. The project was an Interagency response to drug and alcohol problems within the local

community. Small grants were awarded to young people with ideas for innovative projects. During this project, Weave developed a leadership training program, helping young people to implement the project ideas that included dance parties, bike workshops, sporting events, young mothers’ groups and a health program called “Nutritious Delicious”.

- Writing a good practice guide called “Our Place” for practitioners working with Aboriginal young people, in conjunction with Kerry Reid Gilbert. The publication is today widely used as an educational resource for youth work and social work students.
- Producing “Speak Out Speak Easy”, a book of stories from young people on living with mental illness. The book was published in conjunction with the NSW Department of Health and serves to demystify mental illness. It has been distributed Nationally.
- Developing “Mad Pride”, an annual celebration of young people with mental health issues, and their ability to survive and thrive. The event is a creative opportunity to show visual and creative arts skills, music and performance.
- Pioneering a “dual diagnosis” program in 1990, to work with young people battling with drug, alcohol and mental illness issues. The program was developed in conjunction with a Clinical Nurse Consultant, the late Ann Sullivan, from Central Sydney Adolescent Mental Health Services.

GET IN TOUCH

You can reach us at any one of the five locations below. Alternatively, drop by and see us in action!

WEBSITE

www.weave.org.au

EMAIL

info@weave.org.au

LOCATIONS

Central Administration
(Administration, Counselling and Youth Workers)
Waterloo Oval (Corner Allen and Elizabeth Street, Waterloo)
PO Box 2459
Strawberry Hills 2012 (mailing address)
Telephone: 02 9318 0539 (after hours 0408 257 986)
Hours: 9.30am - 5.30pm, Monday to Friday

Weave Women and Children's Centre
133 Morehead Street, Waterloo 2017
Telephone: 02 9699 9036
Hours: 9.00am - 4.30pm, Monday to Friday

Kool Kids Club
(co-located with The Shack Youth Services)
Shop 3, 669 Anzac Parade, Maroubra 2035
Telephone: 02 9344 7963

Koori Access Point, La Perouse
Yarra Bay House
Elaroo Avenue, La Perouse 2036
Telephone: 02 9311 4282



Weave Youth and Community Services
www.weave.org.au

Cnr Elizabeth and Allen Streets
Waterloo NSW 2017
PO Box 2459
Strawberry Hills NSW 2012

Email: info@weave.org.au
Phone: 02 9318 0539
Fax: 02 9699 2999
ABN: 77 722 376 568

